



NEWSLETTER

ECHUCA MOAMA COMMUNITY RADIO

EMFM 104.7
MARCH/APRIL 2024



PRESIDENT'S REPORT - Roger Peake

We have had a couple of working bees in our studios working to improve the sound quality by adding further insulation, acoustic panelling, to the studio walls. Works are still underway, but we hope that you will notice a more professional sound once the project has been completed.



Radio EMFM has been involved in a number of community activities over the last two months. On Saturday 16 March we did an outside broadcast from the Campaspe Discovery Day (photos below) held at the Echuca Library. Discovery Day is a chance for the many clubs and organizations of all kinds in Echuca and Moama to let others know what they offer, and Radio EMFM helped out by interviewing representatives from a wide range of these groups on air.



On April 13 we did an outside broadcast from the Rochester Mural Fest. It was the last day for artists to complete their murals. A number of the artists were interviewed on air during the programme, along with Judy Anderson, a

member of the organizing committee. Remember that, if you missed the interviews during the broadcast (or want to listen to them again), you can find links to podcasts of them either on our Facebook page (you'll need to scroll down) or, more easily perhaps, on our website www.radioemfm.org.au under the "Podcasts" tab at the top of the home page.



My thanks to all our volunteers who gave up their spare time to make these outside broadcasts a success.

BOARD MEMBERS

President: Roger Peake
president@radioemfm.org.au
Vice President: Jim Harris
jimbo@radioemfm.org.au
Treasurer: Chris Moor
treasurer@radioemfm.org.au
Secretary: Dot Hammond
secretary@radioemfm.org.au
Chris Campbell, Maree Harris
Paul Napier & John Vincent

Station Manager &

Sponsorship: John Vincent
sponsorship@radioemfm.org.au

Training: Roger Peake
training@radioemfm.org.au

Membership: Roger Peake
membership@radioemfm.org.au

Production: Dave Hollamby.

Technical Advisor: Graeme Stevens

Website: Dot Hammond

EDITOR: Maree Harris

CONTACT US

56 Sutton St, Echuca
0354 802085
Text: 0434341047
info@radioemfm.org.au
www.radioemfm.org.au
Facebook & Messenger.

LIFE MEMBERS:

John Vincent	2022
Ron Wood	2020
Di Richmond	2015
Karen Jenner	2003
Doug Crow	1996
Rob Kemp- D	2021
Fred Every- D	2007
Harry Ross- D	2003
Les Crook- D	2003

OUTSIDE BROADCASTS

On Anzac Day, April 25, Radio EMFM were once again able to broadcast the Echuca Anzac Day service for those unable to attend in person.



In his closing speech Denis Shanahan, President of Echuca RSL, thanked EMFM for their valuable assistance and their live broadcast of the Echuca Service.



Chris Campbell was the MC, John Vincent and Roger Kirchhofer were the presenters and Roger Peake was the conductor of the Echuca Federal Band.



EMFM were very proud to play such an important part in the Anzac Day service.



CAMPASPE DISCOVERY DAY AT ECHUCA LIBRARY 16/03/2024



Right: Jim Harris, Dot Hammond, John Vincent & Roger Peake.

Below Left: Katie Lynde (Mental Health).

Below: Pauline Gordon CEO Campaspe Shire



Below: Campaspe Shire Councillor Tony Marwood.



OUTSIDE BROADCASTS - DISCOVERY DAY cont'd



Left: Ron Wood interviewed Rebecca Burns (transport) and (right), Austin Ley (economics & planning), from the Campaspe Shire.



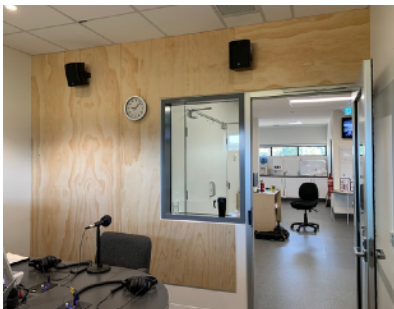
Roger Peake interviewed Kate who represented the Rotary Club.



Our OB's are a team effort. The Discovery Day team included: John Vincent. Roger Peake, Jim Harris, Dot Hammond, Val Horne & Ron Wood, and Graham Hodgson joined the team to help pack up.



INSTALLING SOUND INSULATION MATERIAL



To minimise damage to the plaster, the 5 ply wood backing boards were cut to fit the walls and screwed on. The acoustic panelling was glued onto them. Below: Studio 1 finished.



Above: Kirky, John Vincent & Ken Owen.

We would like to thank Ken for donating his time & expertise to EMFM.



Are you newly retired in Echuca or Moama and looking for a chance to release your inner radio presenter? Talk to us about the possibility of hosting your own radio show. We provide training to anyone interested and prepared to commit their time to joining our on-air team. Roger Peake.

OUTSIDE BROADCASTS - ROCHESTER MURAL FESTIVAL "I Have A Dream" 13/04/2024



Top Left: Winner Gren Freeman (self portrait).

Right: Marco Pennacchia Highly Commended. (Interviewed by Roger Peake).

Below: Chris Duffy, "Glitched" Steve Monk "Livin' The Dream".

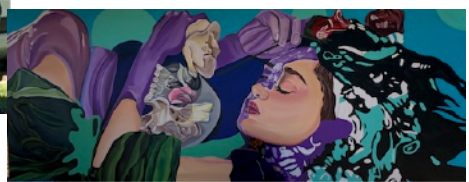
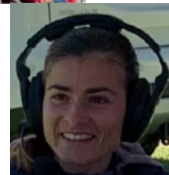
Above: People's Choice Winner Maryann Jenkins - interviewed by Chris Moor.



Left: Artist Ellsworth Ellerton with Photographer Liz Dellar

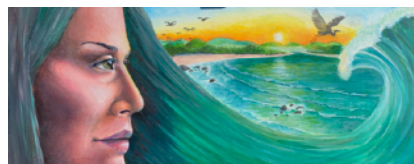


Above: Glynn Jenkins & Graham Thompson



Jim Harris interviewed Kerry Nicholson (available on podcast). His mural is above.

Below: Artist Helen English (mural right) was interviewed by Jim Harris with John Vincent & Chris Moor.



Left Ana Amillas - interviewed by Roger Peake.



OUTSIDE BROADCASTS are an important part of our community work at EMFM. Here is a list of up coming OB's.

- * Steam, Iron & Trades Revival, Rotary Park - June 8th
- * Winter Blues Festival - Sat June 27th
- * Girgarre Music Showdown - Nov 4th
- * Moama Lions Club Carols By Candlelight, Dec 2024.



MUSIC LIBRARY LADIES These lovely ladies, Carol Hone and Tracey Bennett, are still very busy cataloguing the thousands of



CD's in our library and entering them onto a spreadsheet. Thank you to all those who have donated CD's. We no longer need any CD's to be donated to the radio station as it is too difficult to add them into our system at this stage. Please keep them for down the track when the initial set up is completed.



Moor Better Music. Well, I cannot believe we are coming up to another month's end and associated financial activity/board meeting.

We are still working on our new mast project, and things are moving along. On Moor Better Music each Tuesday I have been playing "house" music the last few weeks from "The Ministry Of Sound" and the fans have gone wild, literally.

Coming up soon will be some new CD purchases found on discogs (on-line music store), so listen in as usual every Tuesday for previously unheard gems. Regards, Chris Moor.



Today's New Music at 3pm Wednesdays with Dot Hammond. Dot plays Newly released music received at EMFM during the last 7 days. It is downloaded into our rotational programs.

Some pop, rock, country, blues and alternate - hopefully enjoyable.



30/04/2024 Dave & Marg Dowie spoke about the Echuca Moama Stroke Group on Jimbo's Breaky Program. Great to see past presenter Jacey, & husband Giovanni, back in the studio again.

OUR PRESENTERS



OUR IN-HOUSE TECHNICAL TEAM



If you'd like to join our team email info@radioemfm.org.au

If you are finding it hard to receive EMFM where you live, download the CPLUS App and listen to EMFM anywhere on your phone, computer, or iPad. It's from the CBAA and it's FREE.





From the Programme Committee

We have a few programme changes taking effect from the week beginning Monday 6 May.

* "Road Less Travelled" with Andy Cameron will be heard on Thursdays from 12 noon to 2pm;

* "Potpourri" moves to Wednesday mornings from 9am to 12 noon (for the many Janet and John fans, the "Bit of a Giggle" segment will still be heard at 11.30am);

* "Just Sixties" moves to Thursday mornings from 10am to 12 noon;

* "70s Go to Whoa" moves to Wednesday afternoons at 4pm.

Remember that you can always find our Program Guide at the top of our Facebook page, or on our website.



INTERVIEWS: Peter Garfield (seen here with Kirky & Dot) has been a guest on Dot Hammond's program over the past few weeks. He is a steam boat captain on the Pevensey paddle steamer, and his interview is now available as one of our podcasts.

Echuca Policemen **First Constable Joel King & Senior Constable Paul Kervan** were interviewed on Ron Wood's "Out and About" program on Friday 26th April.



Out & About - Friday Program 10am - Ron Wood

First Friday in Month - Campaspe Shire

Second - Murray River Council

Third - Library Bytes - Jenny Mustey. 11am - ERH.

Fourth - Victoria Police - 11am Echuca Lions Club

Fifth - Echuca Neighbourhood House - Sarah Peake

Any extra interviews - 11am Fridays



NEW SPONSORS:

Echuca Locksmiths
Savoury Bite &
Beaut Utes are
valued sponsors of
EMFM.

Contact John to
become a sponsor.

